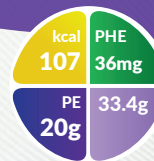




PKU GMPPro Ultra®



FEATURES

A nutritionally incomplete, low phenylalanine, powdered milk drink mix, containing glycomacropeptide (GMP), with essential and non-essential amino acids, vitamins, minerals and trace elements and a small amount of carbohydrate and fat.



• Modern and discreet looking packaging (33.4g sachet)



• 107Kcal per serving (20g PE).

Ordering Information:

To order, contact Nutricia Customer Experience on 1800 889 480

| PKU GMPPro Ultra | Presentation | Product code | Units per carton |
|------------------|--------------|--------------|------------------|
| Vanilla | 33.4g sachet | 201956 | 30 x 33.4g |

INDICATIONS

- For the dietary management of proven phenylketonuria (PKU) in children aged 3 years onwards and adults, including pregnant women (in conjunction with standard folic acid supplementation).

PRECAUTIONS

- Must be used under medical supervision.
- Not for parenteral use
- Not suitable for children under 3 years.
- Use with caution in children aged 3 - 6 years.
- Not suitable as a sole source of nutrition.
- Not suitable for individuals with a cow's milk allergy
- PKU GMPPro ULTRA (Vanilla) should not be used as a sole source of protein but must be given in conjunction with natural protein and other nutrients to supply phenylalanine, fluid and general nutrition requirements of the patient in medically prescribed quantities. Monitor micronutrient intakes to ensure an individual's intakes are optimal.

MIXING INSTRUCTIONS

- Wash hands. Use clean equipment to prepare feed.
- Measure the required amount of cold water into a container and add the prescribed quantity of PKU GMPPro ULTRA.
- Cover with a tight-fitting lid and shake the product until the powder has dissolved.
- PKU GMPPro ULTRA Vanilla/Lemonade is best served chilled and should be consumed immediately.

INGREDIENTS

Vanilla: Casein glycomacropeptide (GMP) isolate (48.29%) (from cow's milk), L-Leucine, Sugar, L-Tyrosine, Dried glucose syrup, L-Arginine, Magnesium hydrogen phosphate, L-Histidine, Flavourings, Tricalcium phosphate, Vegetable oils (Medium chain triglycerides (Coconut and/or Palm kernel), High Oleic Sunflower oil, Rapeseed oil, Sunflower oil), L-Valine, L-Cystine, L-Tryptophan, Calcium hydrogen phosphate, Potassium chloride, Choline bitartrate, Maltodextrin, Calcium carbonate, Potassium citrate, Sodium chloride, Anticaking agent (E551), Taurine, L-Ascorbic acid, L-Carnitine, Emulsifier (E472c), Inositol, Ferrous sulphate, Sweetener (Sucralose), DL-alpha Tocopheryl acetate, Nicotinamide, Zinc oxide, Copper gluconate, Calcium D-pantothenate, Sunflower lecithin, Thiamine hydrochloride, Manganese sulphate, Pyridoxine hydrochloride, Riboflavin, Retinyl palmitate, Sodium selenite, BetaCarotene, Ascorbyl palmitate, Sodium molybdate, Potassium iodide, Chromium chloride, Folic acid, Phytomenadione, D-Biotin, Cholecalciferol, Cyanocobalamin.

ALLERGEN & CULTURAL INFORMATION

- Contains **Milk**

STORAGE

- Store in cool a dry place away from sunlight.
- Once opened, content should be used up immediately.

| NUTRITION INFORMATION* | | Per 100g | Per 33.4g | Per 100ml |
|------------------------|---------|----------|-----------|-----------|
| Energy | KJ | 1356 | 453 | 216 |
| | Kcal | 320 | 107 | 50.9 |
| Protein equivalent | g | 60 | 20 | 9.5 |
| Carbohydrate | g | 14.7 | 4.9 | 2.3 |
| Sugars | g | 7.8 | 2.6 | 1.2 |
| As Lactose | g | 0.05 | 0.02 | 0.01 |
| Fat | g | 2.2 | 0.73 | 0.35 |
| Saturates | g | 0.87 | 0.29 | 0.14 |
| Of which MCT | g | 0 | 0 | |
| Monounsaturates | g | 0.74 | 0.25 | 0.12 |
| Polyunsaturates | g | 0.36 | 0.12 | 0.06 |
| Water | ml | | | |
| VITAMINS | | Per 100g | Per 33.4g | Per 100ml |
| Vitamin A | µg-RE | 551 | 184 | 87.6 |
| Vitamin D | µg | 27 | 9 | 4.3 |
| Vitamin E | mg α-TE | 18.4 | 6.1 | 2.9 |
| Thiamin | mg | 1.7 | 0.57 | 13.7 |
| Riboflavin | mg | 2.2 | 0.73 | 0.35 |
| Niacin | mg | 18 | 6.0 | 2.9 |
| | mg NE | 43 | 14.4 | 6.8 |
| Vitamin B6 | mg | 2 | 0.67 | 0.32 |
| Folic acid | µg | 240 | 80.2 | 38.2 |
| Vitamin B12 | µg | 4.3 | 1.4 | 0.68 |
| Vitamin C | mg | 86.4 | 28.9 | 13.7 |
| Biotin | µg | 43.2 | 14.4 | 6.9 |
| Pantothenic acid | mg | 6 | 2 | 1.0 |
| Vitamin K | µg | 86.4 | 28.9 | 13.7 |
| MINERALS | | Per 100g | Per 33.4g | Per 100ml |
| Sodium | mg | 1006 | 336 | 160 |
| | mmol | 48.1 | 16.1 | 7.6 |
| Potassium | mg | 1571 | 525 | 250 |
| | mmol | 40.2 | 13.4 | 6.4 |
| Calcium | mg | 1442 | 482 | 229 |
| | mmol | 36 | 12 | 5.7 |
| Phosphorous | mg | 1416 | 473 | 225 |
| | mmol | 45.7 | 15.3 | 7.3 |
| Magnesium | mg | 347 | 116 | 55.2 |
| | mmol | 14.3 | 4.8 | 2.3 |
| Chloride | mg | 792 | 265 | 126 |
| | mmol | 22.3 | 7.4 | 3.5 |
| Ca:P ratio | mg | | 1.1 | |

| TRACE ELEMENTS | | Per 100g | Per 33.4g | Per 100ml |
|--------------------|----------------------------|----------|--------------------|-----------|
| Iron | mg | 18 | 6 | 2.9 |
| Zinc | mg | 14 | 4.7 | 0.26 |
| Copper | mg | 1.6 | 0.54 | 2.2 |
| Manganese | mg | 1 | 0.33 | 0.16 |
| Iodine | µg | 188 | 62.8 | 29.9 |
| Molybdenum | µg | 73 | 24.4 | 11.6 |
| Selenium | µg | 73 | 24.4 | 11.6 |
| Chromium | µg | 51 | 17 | 8.1 |
| AMINO ACID PROFILE | | Per 100g | Per 33.4g | Per 100ml |
| L-Alanine | g | 2.4 | 0.80 | 0.38 |
| L-Arginine | g | 3.0 | 1.0 | 0.48 |
| L-Aspartic Acid | g | 3.6 | 1.2 | 0.57 |
| L-Cystine | g | 1.7 | 0.57 | 0.27 |
| L-Glutamic Acid | g | 8.0 | 2.7 | 1.3 |
| L-Glutamine | g | 0.0 | 0.0 | 0.00 |
| Glycine | g | 0.42 | 0.14 | 0.07 |
| L-Histidine | g | 2.4 | 0.80 | 0.38 |
| L-Isoleucine | g | 4.4 | 1.5 | 0.70 |
| L-Leucine | g | 9.0 | 3.0 | 1.4 |
| L-Lysine | g | 2.6 | 0.86 | 0.41 |
| L-Methionine | g | 0.80 | 0.27 | 0.13 |
| L-Phenylalanine | g | 108 | 36.0 | 17.2 |
| L-Proline | g | 4.8 | 1.6 | 0.76 |
| L-Serine | g | 3.0 | 1.0 | 0.48 |
| L-Threonine | g | 6.8 | 2.3 | 1.1 |
| L-Tryptophan | g | 1.4 | 0.47 | 0.22 |
| L-Tyrosine | g | 6.0 | 2.0 | 0.95 |
| L-Valine | g | 5.2 | 1.7 | 0.83 |
| L-Carnitine | g | 0.08 | 0.03 | 0.01 |
| Taurine | g | 0.18 | 0.06 | 0.03 |
| OTHER | | Per 100g | Per 33.4g | Per 100ml |
| Choline | mg | 360 | 120 | 57.2 |
| Inositol | mg | 71.3 | 23.8 | 11.3 |
| Osmolality | mOsmol/kg H ₂ O | 500 | Dilution: 15.9%w/v | |
| Osmolarity | mOsmol/l | 450 | | |

For more information call the
Nutricia Careline 1800 060051
NutriciaCareline@danone.com

Food for special medical purposes, for use under medical supervision.